

ELECTRICAL CHARACTERISTICS

CONTACT CURRENT RATING: 0.5 AMPERE
 VOLTAGE RATING: 30 VAC
 CONTACT RESISTANCE: 35 MILLOHMS MAX.
 DIELECTRIC WITHSTANDING VOLTAGE: 300 VAC

MATERIALS

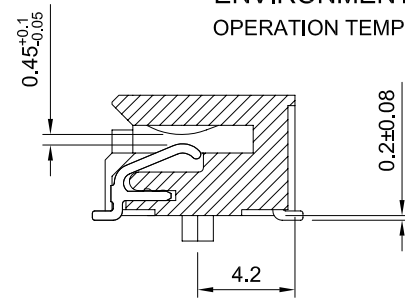
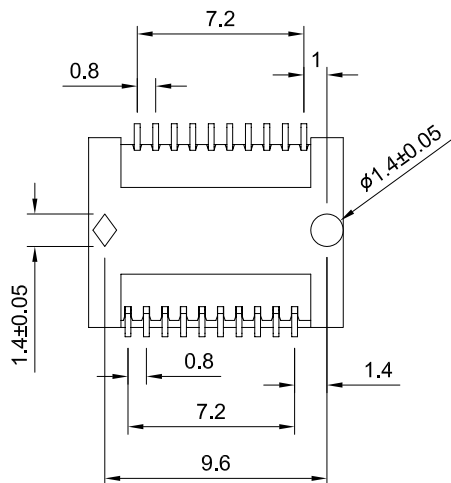
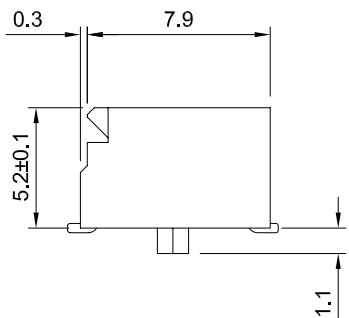
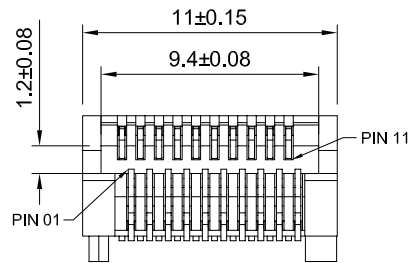
CONTACTS: COPPER ALLOY
 INSULATOR: THERMOPLASTIC 94V-0

FINISHES

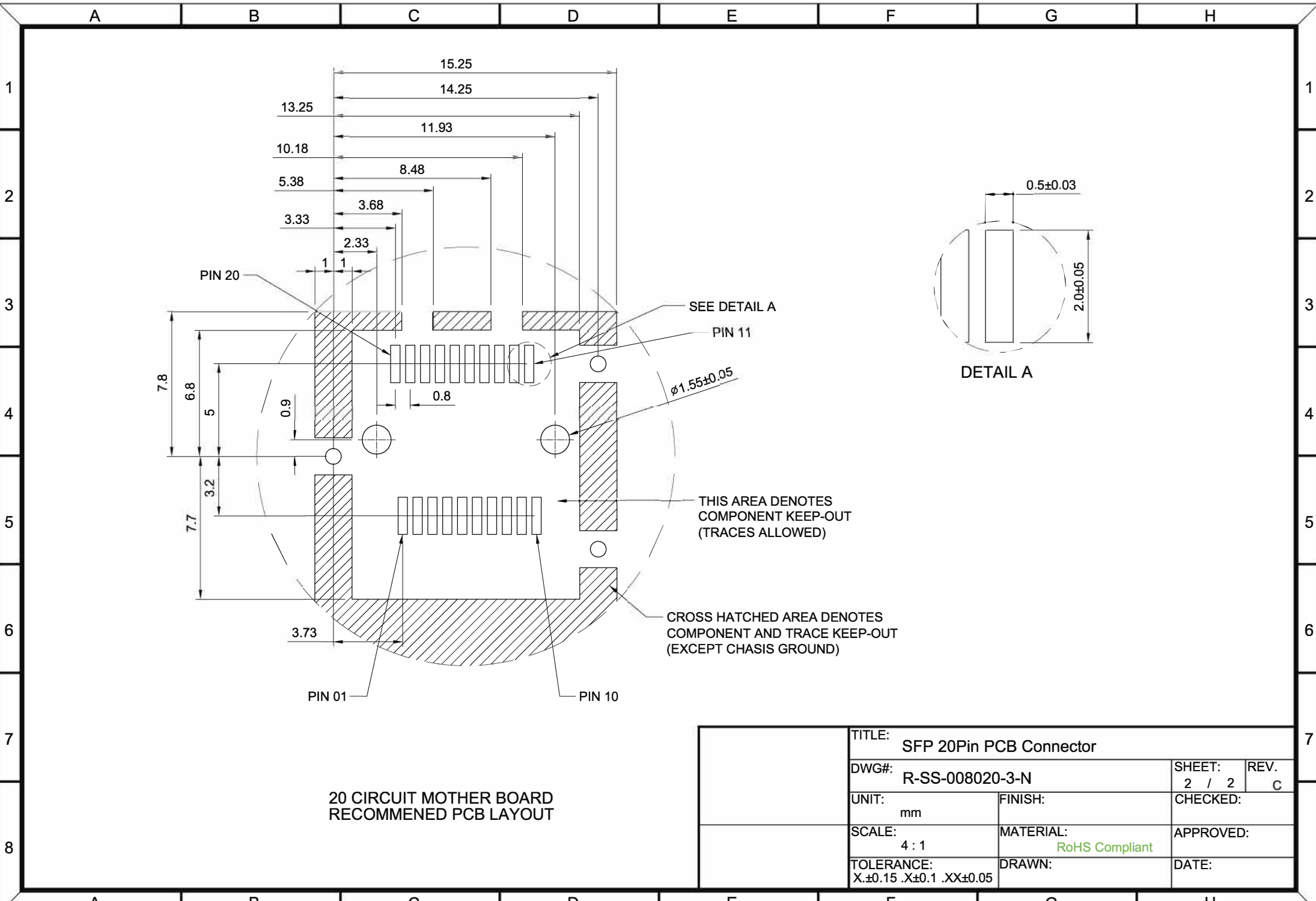
CONTACT: 15 μ" MIN. GOLD ON MATING END;
 TIN ON TERMINATION END;
 ALL UNDERPLATED NICKEL

ENVIRONMENT

OPERATION TEMPERATURE: -55°C TO +85°C



TITLE: SFP 20Pin PCB Connector			
DWG#: R-SS-008020-3-N		SHEET: 1 / 2	REV. C
UNIT: mm	FINISH:	CHECKED:	
SCALE: 3 : 1	MATERIAL: RoHS Compliant	APPROVED:	
TOLERANCE: X.±0.2 .X±0.15 .XX±0.1	DRAWN:	DATE	



20 CIRCUIT MOTHER BOARD
RECOMMENED PCB LAYOUT

TITLE:		SFP 20Pin PCB Connector	
DWG#:		R-SS-008020-3-N	SHEET: 2 / 2
UNIT:		mm	REV. C
SCALE:		4 : 1	CHECKED:
TOLERANCE:		MATERIAL: RoHS Compliant	APPROVED:
X.±0.15 .X±0.1 .XX±0.05		DRAWN:	DATE: